



TOWERIQ™
SIGNAL WHERE IT MATTERS

TQ-540W Indoor Panel Antenna

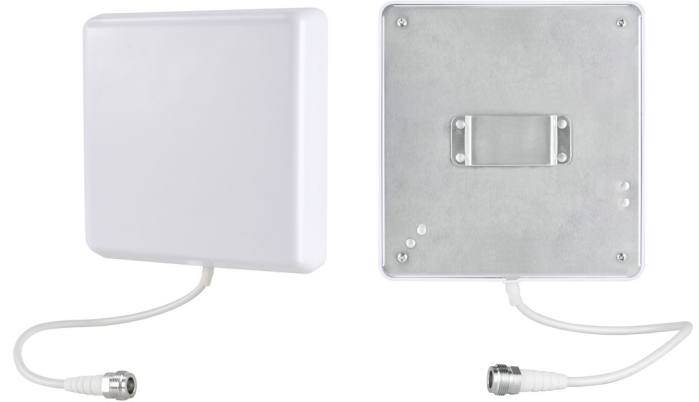
Guardian TQ-540W Indoor Panel Antenna

FEATURES

- Wide Band (698 – 2700 MHz)
- 6.5 dBi / 9 dBi Gain
- Directional antenna broadcasts / receives signal with a 90° beamwidth
- For indoor use only
- Includes wall mount hardware
- Connects to booster with low-loss cable (sold separately)

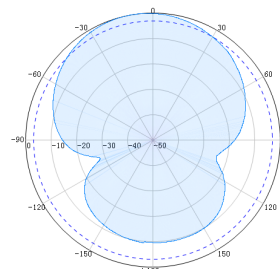
Technical Specifications

Electrical Specifications		
Frequency Range(MHz)	698-960	1710-2700
Gain(dBi)	6.5	9.0
VSWR	≤1.8	≤1.5
Polarization	Vertical	
Front to Back Ratio(dB)	≥15	
Horizontal Beam width	90°	65°
Vertical beam width	70°	55°
Input Impedance	50 Ω	
Max. Input Power	50 W	
Lightning Protection	DC Ground	
Mechanical Specifications		
Connector	N Female	
Dimensions(mm)	168x158x50	
Weight(kg)	0.4	
Reflector Material	Aluminum	
Radome Material	ABS(UV Stabilized)	
Operating Temperature	-40°C to +65°C	

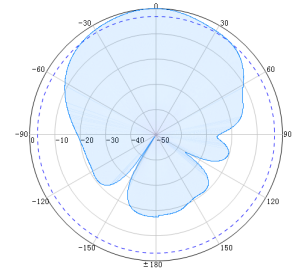


Designed to provide maximum coverage throughout indoor areas, the ultra-wideband panel antenna is a high-gain inside antenna that broadcasts signals in a 90° beam width. The panel antenna transmits and receives signals directionally and is designed to cover 2G/3G/4G/5G and WLAN systems for Cellular, PCS, AWS and LTE frequencies.

Antenna Pattern



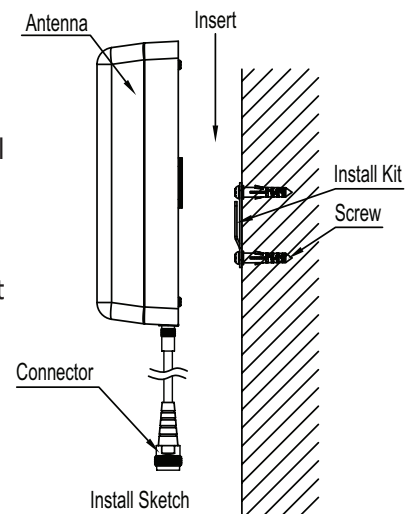
H-Plane



E-Plane

Installation

This directional panel antenna should be mounted on the wall or in a corner to provide the best coverage. The TQ-540W Panel Antenna includes the mounting equipment to mount on a wall mount.



Ordering Information

Model	Description	Stock No.
TQ-540W	TQ-540W Indoor Panel 50 ohm Antenna - 6.5 to 9dBi (inc mounting kit)	3996141